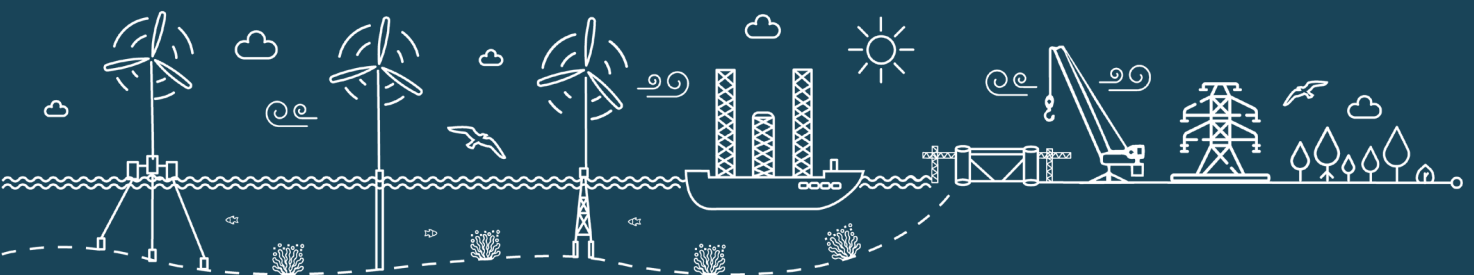




setec

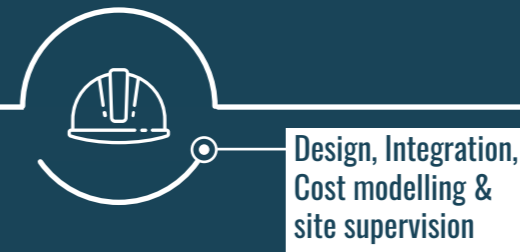
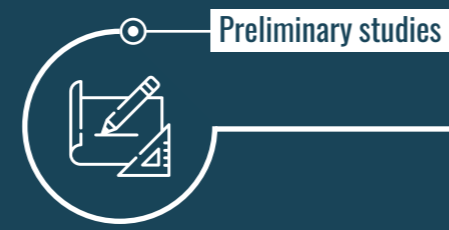
# Offshore Wind Energy



# Committed to Energy Transition

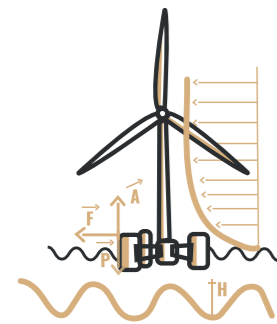


**setec**, an established engineering company providing innovative and reliable solutions to the offshore wind industry



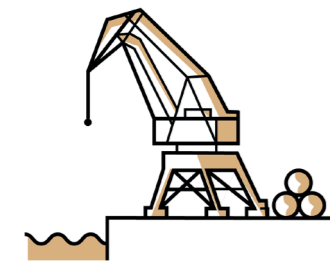
## Environment and Biodiversity

Acquisition, improvement and exploitation of marine ecological data, in the fields of marine renewable energy, submarine cable laying, port development and maritime infrastructure, as well as marine protected areas.



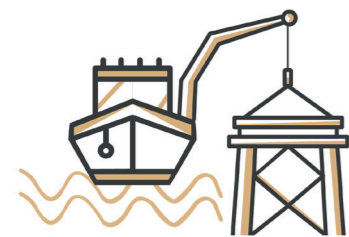
## Innovative Marine Structures

Design of floating / fixed wind-turbines and complex structures, including life cycle and sustainability studies



## Port Infrastructures

New infrastructures and alternative industrial solutions to increase rate of FOWT installations

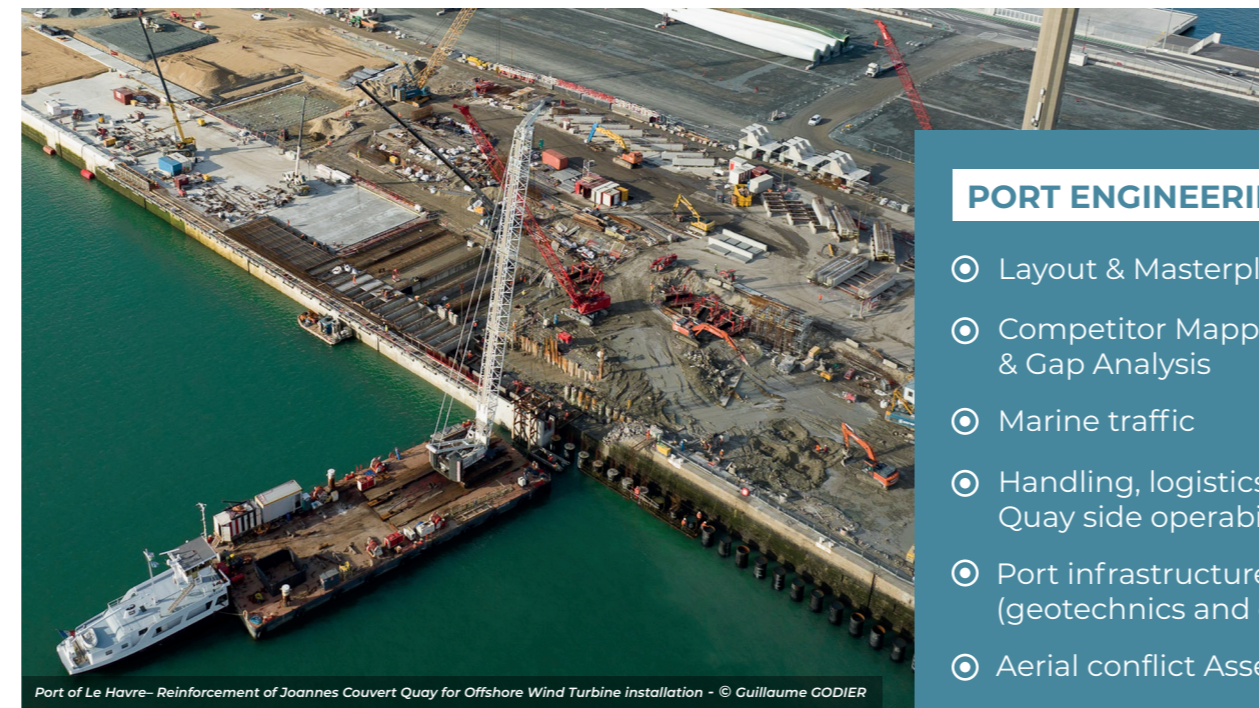


## Transport & installations

Subsea and marine construction. Global T&I campaigns including marshalling, seafastening, heavy lifting, mooring installation, towing, hook-up, cable lay and stabilisation.

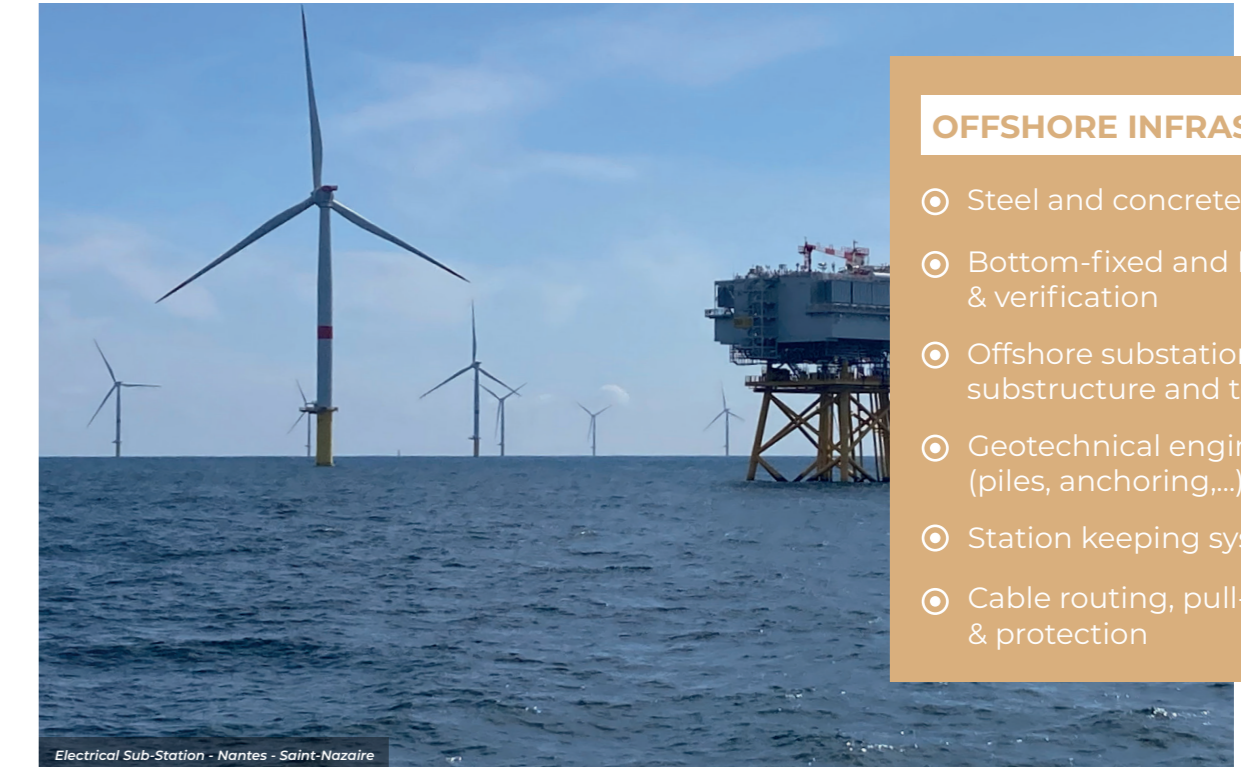
## ENVIRONMENT & BIODIVERSITY

- Marine ecology and biodiversity : collect, treatment and data analysis.
- Environmental Assessment : acceptability, regulation, consenting, permitting
- Environmental Monitoring : physical environment, water quality, oceanography



## PORT ENGINEERING

- Layout & Masterplan
- Competitor Mapping & Gap Analysis
- Marine traffic
- Handling, logistics and Quay side operability
- Port infrastructure design (geotechnics and civil works)
- Aerial conflict Assessment
- Dredging engineering & material re-use solutions



## OFFSHORE INFRASTRUCTURES

- Steel and concrete structures
- Bottom-fixed and Floating design & verification
- Offshore substations, substructure and topside
- Geotechnical engineering (piles, anchoring,...)
- Station keeping system (SKS)
- Cable routing, pull-in & protection

## Offshore Support

- Marshalling
- Cable installation / stabilization
- Towing / Heading control
- Hook-up of Mooring & cable systems
- Heavy lifting
- T&I engineering



## INNOVATION & SOLUTIONS

- Generic floating WTC
- FloatPort®
- Wet storage
- SOW-FT® : Monopile Tool Design
- In-house concrete & Material laboratory
- Proxymae
- Ocean-i

## ENGINEERS & CITIZENS



At the heart of ecological, climatic, technological and digital transitions, **setec** is a world leader in engineering through technical excellence, which has been the driving force behind the company's ambition for more than 60 years.

With over 4200 employees worldwide, **setec's** references are numerous and cover a wide range of sectors such as transport infrastructure, environment, energy, building, urban engineering, port and maritime works.

**setec** is also an independent group, which is owned by the company's engineers, whose energy and expertise are based upon the dedication of their employees. They are constantly developing their expertise to design, model and implement sustainable solutions for renewed purposes. Curiosity and a taste for challenge enable **setec** to invent new skills and innovative approaches entirely dedicated to meeting the needs of their clients.

### Locations:

[Paris](#)

[Nantes](#)

[Concarneau](#)

[Vitrolles](#)

[Toulon](#)

[Aberdeen](#)

[Glasgow](#)

[London](#)



To find out more about our offshore wind energy activity, visit our website.

**[offshorewind@setec.com](mailto:offshorewind@setec.com)**